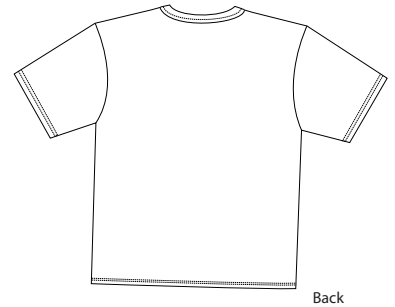
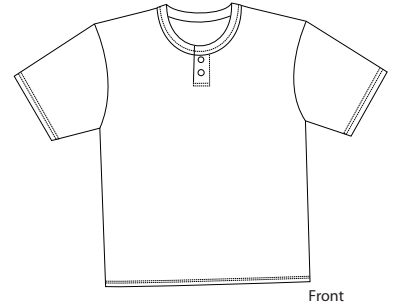


Youth Short Sleeve Henley

Sport-Tek
By Port Authority®



YT210

- * 2-button placket * Dyed-to-match buttons * 5.8-ounce * 60/40 semi combed cotton/poly
- * Rib knit neck * Double-needle sleeve and bottom hem

Care Instructions:
Machine wash cold, gentle cycle.
Only non-chlorine bleach when needed.
Tumble dry low. Do not iron.

Finished Measurements in Inches

Size	XS	S	M	L	XL
Width	16	16	17	18	19
Length	19.25	21	22.75	25	27.25
Sleeve	5.5	6	6.5	7	7.5
Neck	5.75	5.75	5.75	6	6
Placket	4	4	4	4	4

Neck width measured from seam to seam. Chest width measured 1" below armhole. Placket measured by length.
Body length measured from high point shoulder to hem. Sleeve length measured from shoulder seam to hem.

Colors

	Black
	Forest
	Heather Grey
	Maroon
	Navy
	Red
	Royal

Color Chart

Colors	Black	Forest	Heather Grey	Maroon	Navy	Red
Textile PMS	19-4203TC	19-5513TC	No Match	19-1627TC	19-3921TC	19-1764TC
General PMS	Process Black	567C	No Match	5115C	533C	187C
Colors	Royal					
Textile PMS	19-4057TC					
General PMS	541C					

Please Note:
Colors shown are approximate and for reference only. For closest match see PMS colors, or for exact match, returnable samples and grommited samples are available.